

Antarctica

Wild, remote, nearly inaccessible, with only the faintest traces of human exploration, Antarctica beckons the dedicated adventurer. When one thinks of Antarctica and the South Pole, names like Amundsen, Scott and Shackleton come to mind. These names remind us of the epic demands that face all explorers and they inspire us to seek the challenges and rewards that embrace adventure.



After the memorable experience we had in November 2003 for the first midnight sun total solar eclipse observed by mankind in Antarctica, we wanted to do more: see the 2008 February 7 annular solar eclipse from the top of Mt. Vinson, Antarctica's highest peak, one of the very coveted "Seven Summits".

Eclipse-City
November 2006



A sense of
CHALLENGE

Photo & embroidered patch:
©2003, Xavier M. Jubier (Associate at [Eclipse-City Ltd.](#))
2003 November 23 in Dronning Maud Land, Antarctica

“For years I have read about the Polar Explorers:

Amundsen, Peary, Henson, Scott, Cook, and so many others.

Today I felt, as they did so many years ago, the crisp biting air and the stinging wind. Today I heard the crunch of snow beneath my own feet, and felt the tug of a sled packed tight with my supplies. Today I saw, with my own eyes, the sun arc across the sky without setting.

WORDS CAN'T DESCRIBE THE SATISFACTION.”

CONTENTS

INTRODUCTION	3
ANNULAR SOLAR ECLIPSE	4
VINSON MASSIF	5
THE SOUTH POLE	6
OUR TARGET	7
WHAT ABOUT YOU?	8
CONTACTS	9

Contact us today at
xavier@eclipse-city.com
to get started making your
adventure dream come true!

Antarctica

Fewer places are more remote and more inhospitable than the North and South Poles.

At the ends of the Earth lie landscapes of frozen, windswept ice and snow. Second to none in intensity and beauty, the Poles are a destination rich in history, saturated in color and one of the last remaining frontiers for the discriminating adventurer.

If the urge to explore is a part of your character, you'll enjoy looking through this presentation of a unique polar opportunity. We are confident that you will find this awesome adventure sparking your dreams.

Please help us turn that dream into reality.

Our Mission

With years of experience guiding us, we strive to create exceptional and unique five star adventures for the discriminating and intrepid traveler with an emphasis on safety, environmental and social stewardship and first class guest services.

2008 February 7 Annular Solar Eclipse at Mt. Vinson

Mt. Vinson, Antarctica's highest peak and one of the very coveted "Seven Summits", has long beckoned mountaineers. Combining the observation of an annular solar eclipse with Mt. Vinson ascent is a great challenge. Doing it during the International Heliophysical and Polar Years is even better.

At first glance, it doesn't seem to be the ideal vacation spot. Temperatures that rarely climb above -23°C (-10°F); high and strong winds; long white-outs. Yet to the dedicated adventurer, it is a place of subtle, silent, intense and sheer beauty.

Why join Eclipse-City on that awesome journey? Simply said we offer the only and unique opportunity to combine a solar eclipse with a great last frontier adventure. Our staff members are passionate about what they do, and we have developed a reputation for giving exceptional individual attention, both on and off the ice. From the moment you register until you board your return flight home, you can be confident that the entire Eclipse-City staff will work with you to ensure that you have the best possible experience.

clipse city



The spirit of
ADVENTURE



5th
anniversary

MAKING YOUR ECLIPSE ADVENTURE TRAVEL COME TRUE FOR 5 YEARS

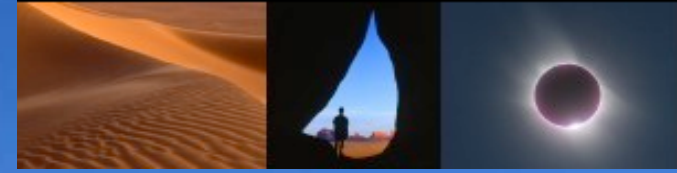
Vinson Massif

As the most remote and coldest of the Earth's "Seven Summits", the Mt. Vinson has long beckoned mountaineers. Situated on the southern main ridge of the Sentinel Range, it lies 1,200 kilometers (746 miles) from the South Pole. At its base it measures 21 kilometers (13 miles) long, 13 kilometers (8 miles) wide and rises 4,897 meters (16,067 ft.) above sea level. Everything about this climb is remarkable: from the extremely low temperatures that can occur at any time to the incredible views of Mt. Shinn, Mt. Tyree, and the Antarctic landscape with an annular eclipse from the summit. Though the main route along the Branscomb Glacier is not considered especially technical, the extreme temperatures, high winds and remote location demand high performance and sound judgment. Previous mountaineering experience is a must and we can help you make arrangements to acquire such experience if necessary.

Note: weather delays are very common in Antarctica. We therefore advise all participants on this journey to have flexible travel itineraries, a positive attitude, and a good sense of adventure!



clipse city



The thrill of
SATISFACTION

South Pole Amundsen-Scott Station Flights

If the South Pole beckons, but pulling sleds isn't your style, you'll enjoy the unique opportunity of flying across the Antarctic continent to 90° South latitude - the geographic South Pole. Your journey begins in the Chilean city of Punta Arenas, long considered the "gateway to the South" for Polar adventurers. A charter flight takes you across the Drake Passage to Antarctica, and the famous Patriot Hills base camp. Patriot Hills is the home base for many polar expeditions and there is no telling what activities might be going on during your stay.

Tents warmed by the solar radiation and a heated "mess hall" help to ensure your comfort and happiness while you are visiting. From Patriot Hills you'll board a smaller Twin Otter plane for the final dash to the South Pole. The South Pole is home to the Amundsen-Scott Polar Research Station as well as both the ceremonial South Pole, and the geographic South Pole. You'll enjoy a grand celebration, including champagne, numerous photo opportunities to document your arrival and an exciting call home from the bottom of the world. As the party winds down you'll be shuttled back to Patriot Hills where you will board your return flight to Punta Arenas or to the Mt. Vinson base camp where you will observe for the first time in mankind an annular solar eclipse in Antarctica.

Note: weather delays are very common in Antarctica. We therefore advise all participants on this journey to have flexible travel itineraries, a positive attitude, and a good sense of adventure!



The thrill of
MISSION ACCOMPLISHED

Our target: enthusiasts of all kinds

Antarctica is the coldest and windiest continent on earth. Its average altitude is 2,290 meters (7,510 ft.), which makes it the highest continent of our planet. Its mass is three times larger than any other terrestrial landmass. This continent is the largest ice extent on Earth: 90% of all the ice on our planet. The ice covers the whole continent and only some mountains remain above the icecap. The regular 10 to 30 kph (6 to 20 mph) catabatic winds, or gravity winds, can reach a velocity up to 300 kph (190 mph). These winds, specific to the polar regions, glide over the glaciers and pick up speed with the cold to render any progression impossible. The lowest temperature measured in Antarctica was -89°C (-128°F). On the other end, during the summer, this continent receives more solar radiation than the equator over an identical period.

Antarctica has long beckoned sailors, explorers, scientists and more recently mountaineers. Most activities occur during the austral summer when there is 24 hours of daylight. The rest of the year, the continent is plunged into total darkness.

Mt. Vinson, the highest peak in Antarctica, is situated on the southern main ridge of the Sentinel Range in the Ellsworth mountains, at the base of the Antarctic Peninsula. This is where our wonderful adventure will take place...

Should we believe there are still unexplored areas, that Antarctica is the last frontier for the explorer? Its genuine beauty has remained pristine, so the explorers of remote areas are attracted by the exploration of this ice continent and by the Mt. Vinson climb. The vastness of this continent plus the great climb combined with an annular solar eclipse will make this expedition very special for mountaineers, eclipse chasers (professional scientists or amateurs) or simply for those loving dreamlike adventures.



Photo & embroidered patch:

©2003, Xavier M. Jubier (Associate at [Eclipse-City Ltd.](#))
2003 November 23 in Dronning Maud Land, Antarctica

What about you?

To carry out this huge project, we ask you for some help to reach our goals, while allowing you to communicate on this event. Working with us would also permit the mandatory preservation of Antarctica, the last pristine environment.

There are various ways to help us:

- financial assistance,
- supply of raw equipment (mountaineering gear, communication equipment, nutrition, ...),
- media: press relation, advertising and/or partnership,
- others... According to your possibilities?

In compensation, we commit ourselves to keep you informed of the advancement of our expedition: regularly we'll send you a newsletter in addition to the updates on our web site.

Moreover, we will promote your company Logotype on every occasions and publications, to allow you to use the dynamics of our expedition.

If you are looking forward to support this Eclipse-City expedition in Antarctica for the annular solar eclipse of 2008 February 7, but wishes to have more information, then do not hesitate to contact us. It will be a pleasure to take the time to answer you!!

In the meantime, please have a look at the following link:

http://xjubier.free.fr/en/site_pages/solar_eclipses/ASE_20080207_pg01.html

Sponsors Contact:

Xavier M. Jubier (xavier@eclipse-city.com)

Associate at [Eclipse-City Ltd.](#)

clipse city



Come along with us as we explore the world in our quest for solar eclipses!

Offering great adventures for everyone...

clipse city



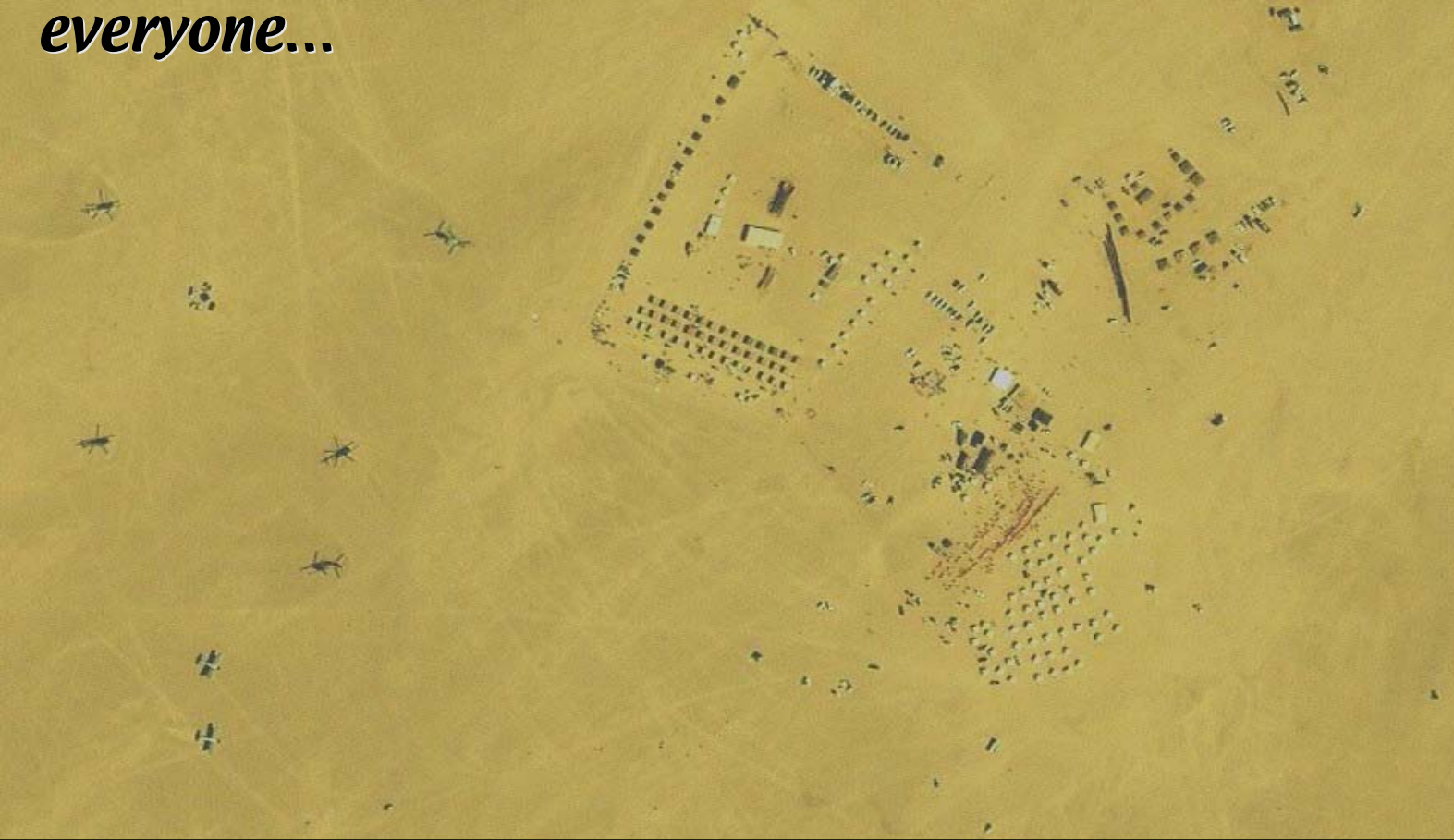
Sponsors Contact:

Xavier M. Jubier (<http://xjubier.free.fr/>)

Associate at Eclipse-City Ltd.

For more information please contact us:

xavier@eclipse-city.com



Total Solar Eclipse Journeys:

Antarctica Nov. 2003 | Southern Pacific Apr. 2005 | Libya Mar. 2006 | China & Russia Aug. 2008 | Japan & China Jul. 2009 | South Pacific Jul. 2010

Annular Solar Eclipse Journeys:

Antarctica Feb. 2008 | Maldives Jan. 2010



***Satellite image (in partnership with GeoEye):
"Eclipse-City" Waw an Namus (Libya) viewing site
1-meter resolution (March 29, 2006 at 09:56 UT)***

